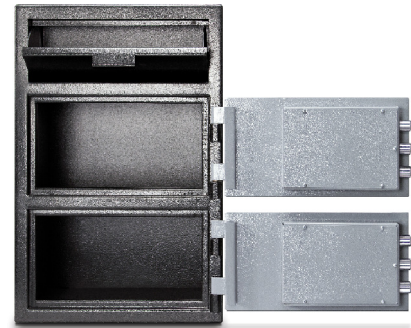
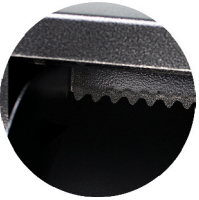
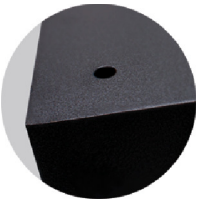
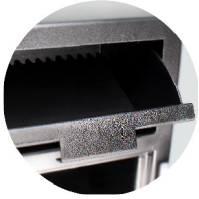


MFL3020EE

MFL SERIES CASH MANAGEMENT BUSINESS SAFES



SPECIFICATIONS

EXTERIOR [HWD]	INTERIOR [HWD]	INTERIOR [CU.FT.]	SHELVING [NO.]	WEIGHT
30" x 20" x 20"	TOP COMPARTMENT: 8 1/4" x 19 3/4" x 17 1/8" BOTTOM COMPARTMENT: 10 1/4" x 19 3/4" x 17 1/8"	3.6	0	184 lbs

SAFE FEATURES

BODY & DOOR

- All steel construction
- 1/2" thick solid steel door
- 3 Massive 1" diameter solid steel locking bolts per door
- Top compartment stores deposits
- Bottom compartment does not have access to the deposits

- Front loading mail box style deposit door accepts large deposits
- Anti-fish baffle helps prevent fishing through the deposit door
- Full length solid steel dead-bar
- Heavy-duty solid steel hinges
- 4 Pre-drilled anchor holes [Anchor Kit included]

LOCK

- Battery operated electronic locks [9V Batteries included]
- Programmable 01-59 minute unlocking time-delay
- Optional 2 user code entry system
- 1 Manager code & up to 5 user codes
- Multiple invalid code defense feature

LOCK OPTIONS

